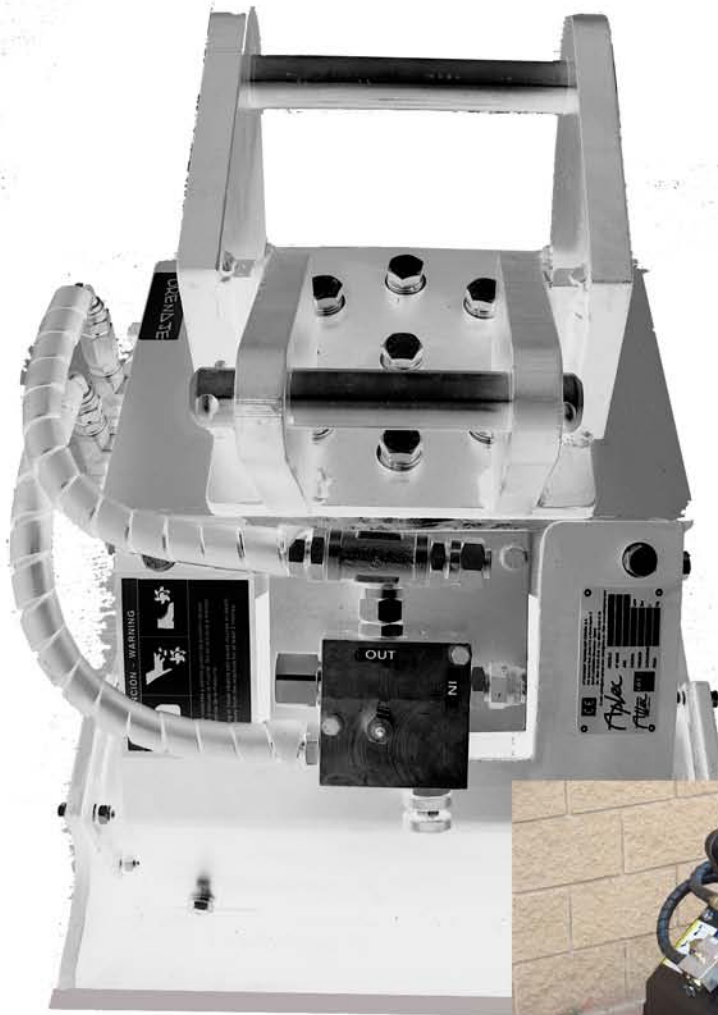


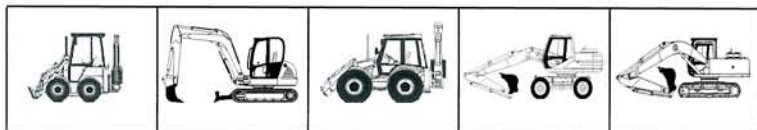
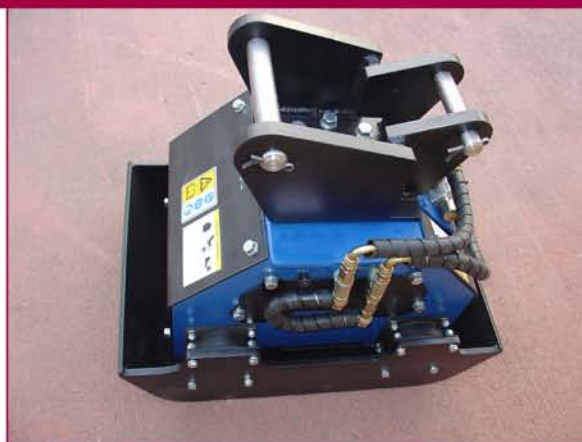
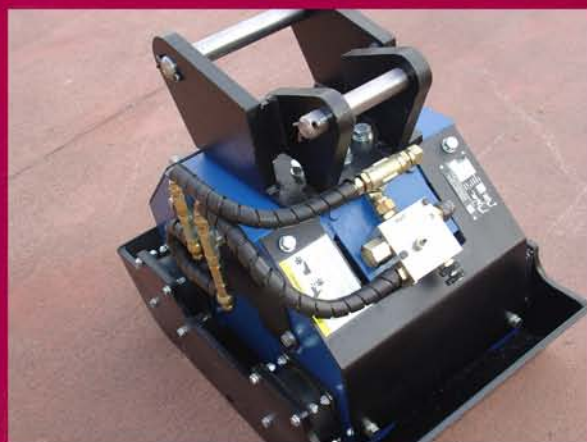


Placas compactadoras en punta de retro

Compactor plates backhoe mounted



Características Specifications



▲ Sencilla y rápidamente acoplable a una gran cantidad de máquinas
Easily and quickly attached to different machines

Especificaciones Técnicas Technical features

Modelo Model	Peso máquina Weight machine	W x L	Lpm	Bar	Fuerza centrífuga Centrifugal force	Peso Weight
	(Ton)	(mm x mm)			(Kp)	(Kg)
PC.3050A	1.5-3	300X500	20-35	200	1500	145
PC.4050A	1.5-3	400X500	20-35	200	1500	155
PC.5050A	1.5-3	500X500	20-35	200	1500	165
PC.4050B	2-4	400X500	25-40	200	3000	200
PC.5050B	2-4	500X500	25-40	200	3000	210
PC.6050B	2-4	600X500	25-40	200	3000	220
PC.5060C	5-8	500X600	40-65	200	3500	350
PC.6060C	5-8	600X600	40-65	200	3500	365
PC.7060C	5-8	700X600	40-65	200	3500	380
PC.8090D	11-15	800X900	60-90	200	4500	650
PC.10090D	11-15	1000X900	60-90	200	4500	700
PC.12090D	11-15	1200X900	60-90	200	4500	750
PC.80100E	15-20	800X1000	60-90	200	4500	750
PC.100100E	15-20	1000X1000	60-90	200	4500	800
PC.120100E	15-20	1200X1000	60-90	200	4500	850

CE